

<b>Getting Ready for the Trip</b>	<b>Pg 3</b>
<b>We're at Camp: What Now?</b>	<b>Pg 13</b>
<b>The Adventure of a Lifetime</b>	<b>Pg 22</b>
<b>I Can't Believe That it's Over</b>	<b>Pg 48</b>

Dear Scouters:

Thank you for choosing Camp Whitsett as your unit's summer camp for 2010. One of the most vivid memories a Scout can have of his Scouting career is the adventure and fun he discovers at Camp. It is our goal to ensure that experience for all our campers. The Western Los Angeles County Council takes pride in its camping programs and facilities, which offer the best quality and most adventurous programs anywhere in the Southwest.

As an adult leader, your role at camp is very important. The leadership you will provide will help guide your youth as they undertake this experience. For some scouts, this will be their first time away from home, residing in a true outdoor environment! This will be a great challenge for them. Your support and efforts will be crucial to their success. The Camp Staff is here to help you accomplish your goals and send your unit home stronger than when you arrived.

This book will help answer your questions about Camp Whitsett, as well as give you an overview of our program, activities and special events. This guide is divided into 4 sections to make your preparation, arrival, and stay at Camp as rewarding as possible.

We hope that this guidebook of information will help to steer you through your summer camp experience.

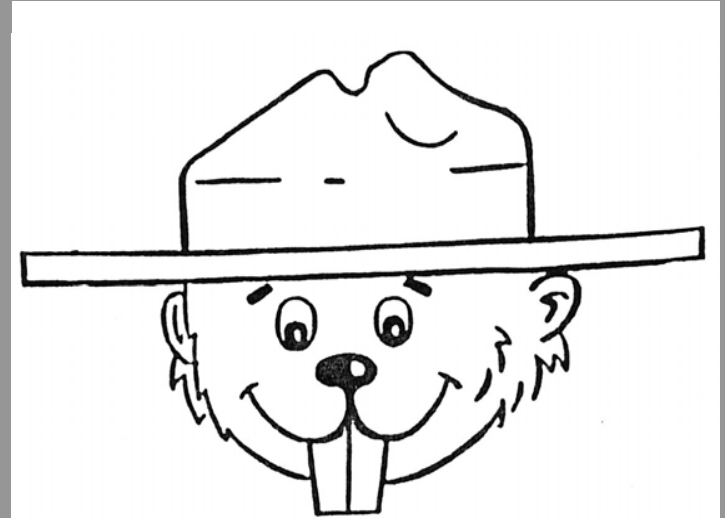
Yours in Scouting,  
The 2010 Camp Whitsett Staff

## Index—(cont)

Money	5
Mountain Bikes	31
NRA Awards	40, 43
On-line information	8
Otter Swim	43
Overnight	32
Paperwork Check-in	14
Payment schedule	5
Personal Gear	11
Program Areas	
Frontier	42
Handicraft	38
High Adventure	39
Horses	41
Nature	41
Pathfinder Program	39
Scoutcraft	38
Shooting Sports	40
Waterfront	36
Rafting	30, 43
Reservations	4
Schedule – daily	28
Scoutmaster Events	45
Sentinel Peak	31
Special Awards	44
Staff Opportunities	50
Swim Checks	14
Trading Post	21
Trail to First Class	39
Uncle Steve Award	44
Uniforms	10
Unit Gear	12
Unit Program	29
White Water Rafting	30, 43
WORDS OF WISDOM	47-48

# Index

Aquacade	28, 43	Merit Badges	
Arrival schedule	14, 25	Archery	40
Bear Run	43	Art	38
Beaver Award	44	Astronomy	41
Beaver Program	33	Basketry	38
Buddy System	36	Camping	38
C.O.P.E.	31	Canoeing	36
Camp Fees and Refunds	4	Climbing	39
CAMP GUIDELINES	17	Environmental Science	41
Camp Map	26-27	Fish & Wildlife	
Camp Planning	6	Management	41
Camp Staff	51	Fishing	41
Camperships	4	Fly Fishing	41
Campfire Programs	25, 30 43	Forestry	41
Campsites	4	Geology	41
Cat Eye Trail	31	Horsemanship	41
Check-in Schedule	14, 25	Indian Lore	42
Consent for Firearms	40	Leatherwork	38
Council Camps	50	Lifesaving	36
Dietary Needs	18	Mammal Study	41
Dining Hall Procedure	18	Nature	41
Directions to Camp	23-4	Orienteering	38
Dutch Oven Cooking	19, 42, 43	Other Merit Badges	42
Family members	5	Pioneering	38
Firearm Rules	40	Pottery	38
First Year campers	39	Religious Services	20
Fishing	32		
Flying "W" Award	44	Reptile & Amphibian	
Free Swim/Boat	37, 43	Study	41
Ice Cream, home made	43	Rifle Shooting	40
Insurance	16	Rowing	36
Late Arrivals	15	Shotgun Shooting	40
Leader Meeting	9	Small-Boat Sailing	36
Mail Service	19	Soil & Water Conservation	41
Meal Times	18	Swimming	36
Medical Information	16	Weather	41
		Wilderness Survival	38
		Woodcarving	38
		Merit Badges, Partial	34



**GETTING READY FOR THE  
TRIP**

<b>Reservations &amp; fees</b>	<b>Pg 4</b>
<b>Planning for camp</b>	<b>Pg 6</b>
<b>Online information</b>	<b>Pg 8</b>
<b>Leader Meeting</b>	<b>Pg 9</b>
<b>Pre-camp Check-Off List</b>	<b>Pg 10</b>
<b>What to Bring</b>	<b>Pg 11</b>

## **RESERVATION AND CAMP FEES**

A NONREFUNDABLE campsite deposit of \$300.00 for Camp Whitsett Summer Camp is required with the reservation form. By February 1, a payment of \$100 per Scout is due, along with the **final minimum number of campers**, which we use to finalize our budget. After February 1, units may still add scouts if there is space available. By May 1, an additional payment of \$100 per Scout is due. 16 DAYS BEFORE YOUR UNIT GOES TO CAMP THE BALANCE OF ALL CAMP FEES ARE DUE All payments received are applied to the final total camp fee of the unit, not to individuals. If there is any reduction in the total number (Scouts or adults) after each payment there is no refund for previous payments. After this “due date” a late fee of 10% will be added to any remaining payments. Please ensure that parents are aware of the cut-off dates from the outset to avoid complications later on.

Camperships are available for scouts from low-income families registered in the Western Los Angeles County Council. Application forms are available at the council office. The deadline for campership applications is **May 1**. The maximum campership available is half of the camping fee.

Your unit must pay full price 16 days before arrival. There are no partial fees for partial weeks, either for Scouts or adults.

**Which Campsite** - There are two types of campsites. The first are tented sites which come with BSA canvas wall tents, cots, and mattresses. The second are Wilderness sites that require your unit to bring its own tenting and bedding material. Specific sites may not be reserved, but may be requested. Sites will be allocated one week before the unit arrives, based on final numbers paid for at that time. Please notify us ahead of time if you will have special needs for your campsite, such as electricity for medical equipment.

**Site Adjustments** – Small units may be required to share a site. Larger units may be asked to either bring a few tents of their own or be split between sites.

## **CAMP STAFF OPPORTUNITIES**

### **An Enviably Reputation**

Camp staff in the Western Los Angeles County Council have earned an enviable reputation. Many leaders in industry and in government consider camp staff service to be an important learning step in a youth’s career.

No other summer job provides the management and personal growth experiences of summer Camp Staff. While other youth are flipping hamburgers and filling grocery sacks, summer Camp Staffers are planning major activities, preparing class outlines, instructing, leading, and becoming familiar with some of the fine points of human nature, as well as general business, facilities construction, repair and maintenance.

### **Procedure**

Interested Scouts (14 and older) and adults of outstanding character and high energy levels are encouraged to contact the Council Office or check on line for an application to serve on camp staff for Whitsett, Sierra Expeditions, Emerald Bay, Catalina Rugged Adventures, and Josepho. They may apply for either full-time paid positions, Counselor-In-Training, or Camp Volunteer staff. Applications are mailed out by the end of November. Interviews take place in late February/early March.

### **Attention Scout Leaders**

All Scout leaders can help improve the quality of their own camp experience by directing qualified applicants to the attention of the Camping Department - 818/785-8700 Ext. 130.

For the most up-to-date camp information, to get downloads of camp forms, or just to see what’s at Whitsett, check our website:  
[www.bsa-la.org/camping/whitsett/whitsett.html](http://www.bsa-la.org/camping/whitsett/whitsett.html)

## ABOUT OUR CAMPS

The Western Los Angeles County Council has some of the best facilities—and programs—in the Western Region. We are able to offer a variety of opportunities to develop outdoor and leadership skills in both youth and adults in many locations.

### Camp Emerald Bay

Emerald Bay is located on the northwest end of Catalina Island, 26 miles off the shore of Los Angeles. It offers 9 weeks of summer camp, and is available for weekend camping in the Spring and Fall. It specializes in activities in the outstanding aquatic environment that surrounds it.

### Camp Josepho

Josepho is in a rustic canyon in the Santa Monica Mountains, and located within Topanga State Park. It has an Olympic-sized swimming pool, a lodge and full kitchen, and a 300-camper capacity open to Scouts and families year-round.

### Camp Whitsett

Whitsett is in the Giant Sequoia national Monument, two hours northeast of Bakersfield and 25 miles north of Lake Isabella. In the rugged Kern River country, it offers a unique mountain-top environment to use as an ideal outdoor classroom, and as a stage for many high adventure activities. It runs a summer camp, and is also available for weekend camping in the Spring and Fall.

### Camp Wolverton

Wolverton is located in the Sequoia National Park, near Lodgepole. At 7200 feet, this 20-acre site makes the perfect base camp to begin a backpacking trip into the High Sierras. The camp is available for use in and around the summer.

**Unregistered family members, cub scouts, spouses and siblings are not permitted into the scout campsites or activity areas.** There is a campground available for families with a portable toilet and running water which may be reserved for \$15/person/night. Children from the family campground are not permitted in the scout campsites or at the activity areas. Families can visit the waterfront area at specified times and may eat meals with the campers for \$8/person/meal.

Late payments and last-minute changes should be directed to the Council Service Center **immediately** and not be left unsettled until arrival at camp.

**Program Fees** - Some merit badges require extra fees for materials. All such materials, as well as other equipment, are available at the trading post.

How much money should a Scout bring to camp? If he is going to buy kits to finish badges or buy Merit Badge pamphlets, then a good plan is \$10.00 per day plus extra for souvenirs and snacks. (Some units bring pamphlet libraries to lend to their scouts.) \$60 for the week should be an adequate amount. But keep in mind, there is always that one extra item that a Scout will say “I just have to have....”

*RULES FOR ACCEPTANCE AND PARTICIPATION IN OUR PROGRAMS ARE THE SAME FOR EVERYONE WITHOUT REGARD TO RACE, COLOR, NATIONAL ORIGIN, AGE, SEX, OR DISABILITY*

For more information please contact the Camping Department.

**Camping@bsa-la.org**

Or visit

**www.bsa-la.org/camping/whitsett/whitsett.html**

and

**www.whitsett.org**

## PLANNING FOR CAMP

### HELPFUL HINTS TO KEEP ON TRACK ALL THE WAY TO CAMP

#### PRIOR TO JANUARY

- 1 Hold a Parent Meeting to introduce your plans. Ask parents to make commitments and make them aware of cut-off dates for payment.
- 2 Recruit at least 2 adult leaders to attend the entire week of camp. (One must be at least 21- and the other at least 18-years old.)
- 3 Plan unit fund-raisers to help scouts raise money needed for fees, transportation, uniform items and extra program materials.
- 4 Start a unit Camp Bank, and encourage the Scouts to put some money each month towards their camp fees. You will need to have them pay you in installments.

#### JANUARY TO MARCH

- 1 Unit leaders and the Committee should review the 2010 Leader Guide.
- 2 A payment statement will be mailed to you based on the minimum number listed on the reservation form.
- 3 By February 1, pay \$100 per scout with one unit check made payable to WLACC-BSA. You are then guaranteed the number of spaces for which you have paid the installment. All deposits are applied to the final camp fee, not individual Scouts.
- 4 Unit Committee should make initial plans for transportation needed.
- 5 If more Scouts decide to sign up for camp, check with the Camping Department on availability and send in the first \$100 installment for each additional Scout; use your reference number (received as your reservation confirmation) on all correspondence and checks.
- 6 Camp medical forms are available online so that Scouts and adults are able to get medical checks done early.
- 7 After February 1, you may still add Scouts if there is space available. If there are reductions in your total numbers (Scouts and adults) after any payment, there is no refund for previous payments.

#### APRIL AND MAY

- 1 A statement will be mailed to you in March/April based on the number of spots with paid installments.
- 2 At least one adult leader should attend the Leader's Meeting in April. At the meeting you will receive a packet of all forms required for camp. The meeting will be conducted by our Camp Director, and it is a good opportunity to ask any questions you may have. Immediately following the meeting the remaining forms will be mailed to units unable to attend.



**About our Camps**

**Pg 50**

**Staff Opportunities**

**Pg 51**

**Index**

**Pg 52-53**

11. Bring Unit spirit to camp! Make the whole Camp come alive with your ideas, spirit and challenges. Be Number One!
12. Be flexible. Hundreds of Scouts attend camp each week, and while the Staff is there to help meet everyone's needs, we all need to practice the Scout Law in dealing with others in Camp.
13. Communicate. If you have a special need, or want to try something spectacular, tell us about it, and we'll give it our best shot.
14. **Advise Scouts to leave valuables with a Leader. Watches, spending money, etc. should not be left in the shower room, in an unattended campsite, or brought to the Waterfront.**
15. Scoutmasters should bring a foot locker or other **lockable** container to protect both Scouts' and Leaders' valuables.
16. Give us honest feedback and evaluation. Give us your ideas. We'll be glad to listen. We want the Summer Camp experience to be the best it can be.



- 3 Begin program planning, considering each Scout's wants and advancement needs. The Online Merit Badge worksheet for Scouts is filled out. Unit leader registers merit badge classes online at [//www.bsa-la.org/camping/whitsett/whitsett.html](http://www.bsa-la.org/camping/whitsett/whitsett.html)
- 4 By May 1, pay an additional \$100 per reserved place to Western Los Angeles County Council. You are then guaranteed this many places at camp. All deposits are applied to the final camp fee, not individual Scouts.

#### **TWO MONTHS BEFORE CAMP**

- 1 Ensure that each Scout and adult leader has made arrangements for a physical examination if necessary.
- 2 Supply each Scout with a personal equipment list.
- 3 Start program planning, considering each Scout's wants and advancement needs. A form will be provided for each Scout to choose activities. The Unit should then compile one master list to bring to camp.
- 4 A final statement will be mailed out to all units. Your original \$300 deposit is factored into the final payment due.

#### **ONE MONTH BEFORE CAMP**

- 1 Finalize Camp program plans and advancement needs.
- 2 Pay balance of fees to Western Los Angeles County Council 16 days prior to your departure at the latest. **After this date there are no refunds for cancellations or no-shows.** After this date any remaining balance will be subject to a 10% late fee. Any Scouts signing up after this date will also pay the 10% late fee. Please make sure parents are aware of this deadline. You may not arrive at camp with extra Scouts without first checking availability from the camping department. These last minute additions will also be subject to the 10% late fee.
- 3 Camp roster **MUST** be completed online at least **16 days** prior to your departure.
- 4 All physical examinations should have been completed at this point.
- 5 Leader to collect individual Scout forms and medicals to be brought to Camp.
- 6 Unit Committee finalizes transportation needed to and from the camp.

#### **A FEW DAYS BEFORE CAMP**

- 1 Hold a personal pack, gear, and uniform inspection.
- 2 Unit and Patrol equipment should be ready for packing.
- 3 Update online roster and merit badge class signups as needed.
- 4 Make a final check on transportation.

## Online Information

<http://www.bsa-la.org/camping/whitsett/whitsett.html>

Online information, available after the Leader Meeting, includes forms and brochures to prepare you and your Scouts for the upcoming summer. The following are highlights and issues that need greater attention from adult leaders.

**Roster:** Registering Scouts and Scouters for camp is done online based on numbers from your statement/invoice. Information on how to register Scouts on the Roster is available May 1, 2010.

**Merit Badge Sign-Up:** A form, available online, is provided to help Scouts plan their merit badge week. Once completed, Scouts give the forms to the adult leader responsible for registration who enters the information online. Registration is to be done before coming to camp.

**Health Forms:** All campers, adult and scout, must provide completed *Annual Health and Medical Record forms*. A school sports physical is not acceptable. Part B, the Physical Examination, must be filled out by a licensed health care provider at most 12 months prior to attending camp. These forms can be found online at [whitsett.org](http://whitsett.org).

**Please note - The *Permission to use a firearm* form will be separate and must be fully completed prior to attendance at camp. Any camper without this form will be unable to participate in any Field Sports Activity. This form is also available at [www.whitsett.org](http://www.whitsett.org).**

## EXPERIENCE TELLS US

(From our collection of Scoutmasters' evaluations)

1. Summer camp is NOT a merit badge mill. The boy does NOT pay a fee and automatically get badges. Camp offers merit badges as **one portion** of the overall program.
2. The first year Scout camper is well advised to try NOT MORE than **two** merit badges at camp, and one of these should be a handicraft or nature badge.
3. Plan on a maximum of four merit badges and activities (such as BSA Lifeguard) per week per Scout.
4. The most difficult merit badges to earn are those requiring a great deal of physical skill, coordination and stamina: Rowing, Canoeing, Lifesaving, Shotgun, Archery, Horsemanship, and Climbing.
5. Complete advance written work at home. Camp is not an ideal classroom for written work. The prepared Scout comes to camp with written work already done.
6. Boys should try doing something new at Camp and get a well-rounded experience. Earn badges from more than one area.
7. Plan time for your Scouts and yourself to enjoy the entire Camp. Take a hike to a point of interest or do an early morning activity.
8. **Come to camp prepared!** Have patrols already organized. Work on ideas in patrols and have the patrol leaders represent the group at Camp. Come with some of your own activities planned.
9. Your campsite is your home for the week, so work at making it comfortable. Bring banners and flags to dress it up.
10. Schedule time for rest! Take time to sit and enjoy the beauty around you. Don't keep such a pace that you miss the trees, the birds, and the fresh air.

## SCOUTMASTER EVENTS

**Leader Meeting:** Leader Meetings are held Sunday evening and Friday mornings. During the week, Commissioners and other staff are available in the mornings after breakfast for informal question-and-answer sessions. The Commissioners are also usually available after each meal, check with them if you have any questions.

**In-Between . . .** and throughout the week the unit leaders choose how to use their time for the greatest enjoyment.

**Adult Leader Training:** Camp is a great place to get those essential training taken care of. The Camp offers a number of training for adults from Safety Afloat to Scoutmaster Essentials. Please check at the Leader meeting for the finalized training schedule.

**Special programs:** Many areas offer activities during the week just for adult unit leaders. Be sure to check at the Leader Meeting or upon arrival. Popular activities often include a Unit Leaders' Shoot at the rifle range, nature hikes, and adult C.O.P.E..

**Advancement:** Adults at Camp bring special skills! Let us know if you are available to assist the Staff with instruction.

**Service:** If you are a carpenter, electrician, plumber or handyman, Camp can use your skills! Bring your tools if you can help.

**Computer Lab:** We also have a couple of computers available for our adult leaders to use for checking emails, and doing online merit badge changes only.

## LEADER MEETING

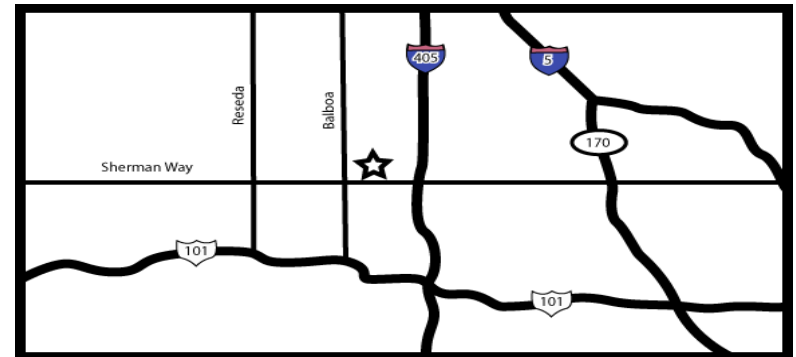
**EVERY UNIT NEEDS REPRESENTATION** at the Leader Meeting, even if they attend Whitsett every year with the same leadership.

Every year the Camp Program changes slightly —and in some years it might change a lot! Staff talents changes, kids change, Scouting emphasis changes, and so the program changes, too.

Here are some of the important agenda items.

1. Explanation of this year's daily schedule.
2. Explanation of finalized list of merit badges and other advancement opportunities to be offered.
3. Discussion of Camp-wide activities and special events with special attention to the new and revised.
4. The all important question-and-answer session. We want to know what you want.
5. At the meeting the Leader Packet is distributed. This packet contains all the necessary forms for camp.

**Two** Leader Meetings will be held on the same day: one morning, one afternoon; your unit must only send representation to one. They will be held at the Western Los Angeles County Council office, 16525 Sherman Way, Unit C-8, Van Nuys, CA 91406 (between Balboa & Hayvenhurst).



If your unit is not represented at the meeting; units in the Western Los Angeles Council are expected to pick up the packet from the Council Office or local office. Packets will be mailed **only** to out-of-Council units after the meeting.

## **PRE-CAMP CHECK-OFF LIST**

Preparing for Summer Camp can take a lot of work: taking care of the details and making sure everyone knows what is going on.

### **FORMS FOR SCOUTS AND PARENTS:**

- 1 "What I would like to do at Camp Whitsett"
- 2 Medical and consent to use firearm form
- 3 Merit Badge prerequisite forms
- 4 White Water Rafting release form
- 5 Equipment and clothing list
- 6 Mailing address of camp
- 7 Driving instructions

The first four forms are to be returned to the Scoutmaster after completion by each Scout attending camp. PLEASE CHECK ALL SIGNATURE LINES.

### **THINGS TO MAIL TO COUNCIL OFFICE:**

(Due in the office 16 days prior to your camping date)

- 1 Camp Fees
- 2 Sequoia National Forest Survey form
- 3 Local Tour Permit submitted to your local council office

### **THINGS TO BRING WITH YOU TO CAMP:**

- 1 **Medical and Youth Permission forms** --- (double sided, check all signatures)
- 2 Merit Badge prerequisite forms (to Merit Badge instructors)
- 3 White water rafting releases (to give to Rafting company)

*Forms are available online at [www.bsa-la.org](http://www.bsa-la.org), or [www.whitsett.org](http://www.whitsett.org)*

## **UNIFORMS**

At Camp the official Scout uniform is appropriate dress throughout the week. We ask EVERYONE to be in uniform for the evening meal and for evening colors. We encourage Scout shorts and a unit T-shirt (or other scout activity shirt) be worn by everyone during the rest of the day. Leaders also are requested to wear official Scout uniform or activity uniform. Leaders are reminded that all adults should demonstrate a good example to the Scouts by wearing appropriate attire for a Boy Scout camp.

## **SPECIAL RECOGNITION AND AWARDS cont'd**

Camp Whitsett offers one patrol recognition: The Uncle Steve Award. These awards are given at the discretion of the Unit Leader. Patrols must consist of 4-8 boys. For the award progress form, visit the Camp Business Office.

### **THE UNCLE STEVE AWARD**

1. Bring/make a Patrol Flag (approved by Handicraft director)
2. Make an Uncle Steve Bead Holder (approved by Handicraft Director)
3. Patrol Flag brought to all colors
4. Patrol sits together for all meals
5. Line up by patrol for all colors
6. Patrol assigned to adjacent tents
7. Patrol Tents and surrounding area kept clean for the week
8. Out-of-camp activity completed by patrol
9. Patrol participates in overnight campfire
10. Program area participation: visit and participate in an activity at five different areas of camp. Receive a bead and attach it to the Bead Holder
11. Patrol Participates in a service project that is pre approved by the Camp Director or Commissioner

## **SPECIAL RECOGNITION AND AWARDS**

Camp Whitsett offers two individual camper recognitions: The Beaver Award and The Flying W Award. These awards are given at the discretion of the Unit Leader.

### **BEAVER AWARD**

1. Attendance at Camp for 6 days and 5 nights.
2. Complete a one hour service or conservation project.
3. Pass 5 rank advancements or earn one merit badge.
4. Put into daily use the Scout Oath and Law.
5. Do proper share of patrol duties.
6. Participate in a Unit “free time” activity or an assignment given by the leader

### **THE FLYING W AWARD**

1. Complete Beaver Award Requirements.
2. Complete an additional 2-hour service project.
3. Complete 8 of the following:
  - a. Tie 5 of the basic 8 knots.
  - b. Complete one handicraft project.
  - c. Teach a skill to two or more Scouts.
  - d. Complete one additional merit badge.
  - e. Find, prepare, and eat an edible plant (see Nature)
  - f. Point out 4 constellations.
  - g. Participate as a leader in a unit activity.
  - h. Swim the quarter mile swim.
  - i. Shoot a score of 40 or better at the Rifle Range.
  - j. Shoot a score of 20 or better at the Archery Range.
  - k. Complete an assignment or assignments given by the leader.

## **WHAT TO BRING - PERSONAL GEAR**

### **MANDATORY ITEMS**

Medical form signed by physician  
Signed Rifle Consent  
Merit Badge prerequisite forms\*  
Notebook, paper, pens  
Stationery, stamps  
Spending Money (about \$60)  
Scout Handbook

### **CLOTHING ITEMS**

Scout Uniform (Class A) including  
scout shirt and shorts/pants,  
neckerchief (required at  
evening meal and colors)  
Sweater or jacket (it can get cool)  
Hat or visor  
Jeans  
Shirts (3 min.)  
Shorts (2 pair min.)  
Hiking boots with proper socks  
Tennis shoes with proper socks  
Swim suit and beach towel  
Rain poncho  
6 pairs of socks  
Underwear for 6 days  
Pajamas

### **CAMPING GEAR**

Sleeping bag  
Duffel bag or large backpack  
Sleeping pad and pillow

### **TOILET KIT**

Medication (if needed)  
Toiletries, including soap and  
shampoo, toothpaste and  
toothbrush, towel/washcloth  
Emergency toilet paper  
Deodorant  
Shaving gear (if needed)  
Comb & small mirror  
Sunscreen  
Chapstick  
Personal first aid kit  
Handkerchiefs

### **CAMP NECESSITIES**

Flashlight and batteries  
Compass  
Pocket knife & Totin’ Chip  
Canteen or water bottle  
Clothesline/clothespins

### **OTHER**

Clock/watch  
OA Sash  
Camera/film  
Water shoes for rafting  
Fishing tackle

If taking the Lifesaving or Swimming Merit Badge, bring extra clothes for “survival while in the water” - long pants, long-sleeve shirt, socks, shoes.

**Label ALL clothing and other items brought to Camp.**

## WHAT TO BRING - UNIT EQUIPMENT LIST

Your campsite will be your home away from home, and each Unit or Patrol will need to set up its area within its campsite. Camp Whitsett will provide each site with the following equipment:

Tents in tented sites*	Picnic Table
Wash Stand	Fire pit and fire tools
Broom and Hose	Latrine and toilet paper

\* *Wilderness camping units MUST bring own tents!*

NOTE: Dutch Ovens are available for cobblers.

### Optional Equipment Brought by Unit

Flags - Unit and Patrol	Bear bag or bear can
First aid kit	Gas or liquid fuel stoves and fuel
Popcorn popper (campfire type)	Cracker barrel food and supplies
Charcoal	Games, stunt/skit supplies
Tool kit (pliers, hammer, scissors)	5-gallon buckets (for laundry, etc)
Repair kit (tape, wire, twine, etc.)	Tablecloths

### Advancement

Merit Badge pamphlets	Other handbooks and guides
Pens/pencils	Paper, notebooks, clipboards
Poster board	Felt-tip pens
Push pins or thumbtacks	Misc. Scoutcraft teaching aids
Unit Advancement Records	

### Scoutmaster Needs

Copy of Unit Roster	Leader's Guide for Camp
Notebook paper	Unit insurance information
Handbook	Bear Bag (stuff bag is ideal)

**NOTE:** This equipment list is meant to serve as a general guide. Use your own discretion in choosing what to take and what to leave.

### **Items Scouts are prohibited from bringing into camp:**

Firearms	Radios and TVs	Illegal substances
Ammunition	Alcohol and tobacco	Fireworks
Footlockers	Large/sheath knives	Switchblades
Jewelry	Pornography	Gang paraphernalia

Pagers and cell phones (which will not work in camp).

## ACTIVITIES

The following is a list of many of the activities other than merit badges that may be offered during your stay at Camp Whitsett.

### AQUATICS

Swimming  
Rowing  
Canoeing  
Free Swims  
Kayaking  
Scout Lifeguard  
Water Polo  
Wilderness Swim

### SHOOTING SPORTS

Archery shooting  
Rifle shooting  
Shotgun  
NRA shooting awards

### HANDICRAFT

Craft Projects  
Pottery

### HIGH ADVENTURE

Mountain Bikes  
Project C.O.P.E  
Rock Climbing  
Sentinel Peak  
Whitewater Rafting\*

### HORSEMANSHIP

Trail rides

### FRONTIER AREA

Indian/Frontier crafts  
Wilderness Living

### NATURE

Conservation Project  
Nature Hike  
Nature Trail  
Nature Games

### SCOUTCRAFT

Rope work  
Totin Chip  
Cat Eye Trail  
Firem'n Chit  
Knots and Lashings  
Paul Bunyan  
Unit - Get - Togethers

### OTHER ACTIVITIES

Aquacade  
Bear Run  
Otter swim  
Dutch Oven Cooking  
Home Made Ice Cream  
Campfires  
Religious Services

\*Whitewater Rafting is a half-day activity. Sign-up information is available at the Leader Meeting and on the Council webpage.

## **FRONTIER AREA**

In the Frontier Area scouts can earn the Indian Lore Merit Badge and learn more about Native Americans. They can experience Mountain Man activities like bull whipping, tomahawk throwing, knife throwing, and Dutch oven cooking.

### **Merit Badge:**

INDIAN LORE

## **OTHER MERIT BADGES**

A number of extra merit badges may be available in any given week where staff or adult leaders offer their services for a particular merit badge. First Aid merit badge is not normally offered at camp.

If you or another adult in your unit is interested in teaching or helping teach a merit badge, please contact us through the Council web page.



<b>Arrival</b>	<b>Pg 14</b>
<b>Medical Information</b>	<b>Pg 16</b>
<b>Camp Guidelines</b>	<b>Pg 17</b>
<b>Food Service</b>	<b>Pg 18</b>
<b>Mail</b>	<b>Pg 19</b>
<b>Religious Services</b>	<b>Pg 20</b>
<b>Special Services</b>	<b>Pg 20</b>
<b>Trading Post</b>	<b>Pg 21</b>

## UPON YOUR ARRIVAL

**ARRIVAL TIMES:** Please arrive between **1:00 PM and 3:00 PM on Sunday**. The Main camp gate will remain closed until 1:00 p.m. A guide will welcome you in the parking lot. Units who do not wish to travel to camp on Sunday **must** contact the Camping Department 16 days ahead of time to make alternative arrangements. We have facilities for Saturday arrivals upon prior request only.

**CHECK IN:** As Scouts unload the cars, the leader checks in at a designated location. Bring with you an updated copy of the roster. If all fees were paid on time to the Council Service Center, and forms are correct, you won't be long. **Separate all paperwork so that check-in will move as quickly as possible.** Forms should be out of folders and files, as well as separated into separate piles of Medical Forms and Signature Forms. Rafting forms and merit badge prerequisite forms should be kept separately.

**MOVE IN:** While checking in, your unit will then be shown to your campsite. **Remember, only one car at a time may go past the parking lot. Please do not drive into the site, but stay on the road.** After the gear is unloaded, change into swim suits and prepare to go through the medical screening. Your campsite, tents and facilities will be checked at this time. Remember the tents in the tented areas are two person tents, so assign tents accordingly.

**MEDICAL SCREENING:** Your guide will then take you to the health lodge where our medical officer will look over the physical forms. Each Scout should hold his own form for a short interview with the medic. Leaders will do the same. Medicals will be kept in the Medical Lodge for the week. You will receive the forms at check-out on Saturday.

**SWIM CHECKS:** We follow the BSA Safe Swim Defense plan. This means everyone using any of the aquatics facilities must have a medical form and take the simple swim test to determine ability.

**ORIENTATION:** During this first day, everyone will be told what goes on at summer camp and questions will be answered. A Camp tour will be conducted by a staff member.

**PROGRAM:** Boys sign up for Merit Badges online. Monday is the first day Merit Badges start, in the area in which they are offered.

## HORSEBACK RIDING

Trail rides and instruction are tentatively scheduled as follows but may change due to weather and other restrictions. Tickets can be purchased at the Camp Whitsett Trading Post.

Monday, Tuesday, Thursday, Friday 2:30 PM  
Tuesday, Wednesday, Thursday 3:30 pm Overnight Rides  
Leader Rides will also be available throughout the week

### Merit Badge:

## HORSEMANSHIP

HorsemanSHIP merit badge is scheduled from 9:00 a.m. to 12:00 noon. Scouts wishing to enroll in the HorsemanSHIP Merit Badge must be at least 14 years old and First Class or above. This is Western Los Angeles County Council policy, due to the physical requirements of this badge. In the interests of safety, the Horse Program Director's decision will prevail as to which Scouts are accepted to work on this merit badge

## ECOLOGY/CONSERVATION

Scouting has always been concerned about the environment and conservation. Camp Whitsett is dedicated to seeing that campers continue this tradition. Our Nature Lodge instructs on a number merit badges as well as features a wonderful animal area for viewing and petting.

### Merit Badges:

Environmental Science	Nature	Mammal Study
Forestry	Soil & Water Conservation	
Fish & Wildlife Management	Astronomy	
Weather	Geology	Fishing
Fly Fishing	Reptile & Amphibian Study	

## SHOOTING SPORTS

**RIFLE & SHOTGUN RANGES** - Safety comes first at all our ranges. We use .22 caliber single shot bolt action rifles, and 20- and 12-gauge shotguns. Scouts and Scouters can shoot only when approved trained adult supervision is present. The director of the Shooting Sports Director is a National Camp School trained instructor in the use of rifles and shotguns.

The Rifle and Shotgun merit badges are offered in this area. These are difficult merit badges to obtain and will take a great deal of the Scouts time to complete. It is strongly suggested that Scouts be 14 and have experience before taking Shotgun.

**Please Note:** Do not bring personal ammunition or firearms of any kind (including bows) to camp. These are NOT allowed to be used or kept in Camp. BSA National Requirements and insurance regulations stipulate strict guidelines for the use of the rifle range.

### CONSENT TO USE FIREARMS

*California Laws require that we MUST have the parent's consent for minors to use our Rifle Range. If a parent does not wish to give consent, please write the words, "NO PERMISSION" across that section of the youth medical form WLACC-001. If the form does not have a signature the scout will not be allowed on the rifle and shotgun ranges.*

**ARCHERY** - In the Archery merit badge classes Scouts concentrate not only on target scores and proper use of the bow, but also on learning to make bow strings and fletch arrows.

### Merit Badges:

Rifle Shooting          Shotgun Shooting          Archery

### Other Shooting Sports Activities:

The Shooting Sports area also offers Open Shoots, Leader Shoots, and Unit Shoots, when available.

## LEADER ALERT

**Begin your recruiting efforts early! At least two leaders must be with your Scouts at all times. One must be at least 21, the other at least 18.**

Your Scoutmaster (or Unit Leader) may not be able to attend Camp for the full week, but it is important that at least one of your leaders be there the whole time. Otherwise your program will have no continuity and little chance for success, and discipline will be a likely problem.

On the first day considerable time is spent explaining the program, its operation and facilities (so that unit leaders, even those new to Scouting, will understand what to do). If the key leadership changes, the benefit of this orientation will be lost. A leader who is with the boys for the entire week will get to know the boys, know what the Scouts are doing, and be able to foresee possible problems and deal with them effectively before they develop.

Smaller units not able to recruit assistants may want to join forces with other units. The Camping Department at the Council office may be able to help put such units in touch with one another.

Camp Staff will work with unit leaders to help make sure the Unit's camp goals are met, and will be responsible for most program presentation. Day-to-day supervision and discipline however, is the job of the unit. **At no time may a unit be in camp without two adult leaders.**

## LATE ARRIVAL

Summer camp is open from Sunday to Saturday. The time between Saturday closing and Sunday opening is Staff time off; waterfront and camp support facilities are closed. There are a number of Forest Service campsites available in the area for units who are unable to travel to camp on Sunday for religious or other reasons. For further inquiries to early arrival or late departure, contact the Council Office.

Units arriving late on Monday will miss a leader meeting, the orientation, and camp tour. Notify the Camping Department ahead of time so that arrangements can be made for priority attention to be given for completing swim checks and medical screenings upon your arrival. Please try to arrive before 7:30 am; if you do you should have no problem getting checked in and making your first merit badge sessions.

## MEDICAL INFORMATION

**Health Forms:** All campers, adult and scout, must provide completed *Annual Health and Medical Record forms*. A school sports physical is not acceptable. Part B, the Physical Examination, must be filled out by a licensed health care provider at most 12 months prior to attending camp. These forms can be found online at whitsett.org.

**Please note - The *Permission to use a firearm* form will be separate and must be fully completed prior to attendance at camp. Any camper without this form will be unable to participate in any Field Sports Activity. This form is also available at [www.whitsett.org](http://www.whitsett.org).**

Christian Science faith members must have a written statement from a licensed health care practitioner attesting to their health and must complete a request for religious exemption from medical care and treatment form, available from the Council Camping Office on request.

A fully equipped camp health lodge is provided. A doctor or trained first aid person is available at all times. Those with serious injuries or illnesses requiring hospitalization will be transported to the nearest hospital where we have an advance agreement for treatment.

Physicals will not be given at camp. A Scout or leader staying at camp more than 72 hours who has not had a physical will be not be allowed to participate in activities or asked to leave.

## INSURANCE

All Scouts and leaders who attend our camp must be covered by insurance and must provide WLACC with the name of the unit's health and accident insurance policy, the policy number and expiration date. If insurance is taken out by your council these details are not needed. It is a good idea to attach a copy of the Scout's medical insurance card to the Physical in case of an emergency.

## TRAIL TO FIRST CLASS PROGRAM

The First Year Rank advancement is a Monday through Friday class from 9 am to 11 am. Scouts in this program work with our Pathfinders, form patrols and use the Camp as a classroom This is a course for those Scouts who have just joined Boy Scouts or have very little done on their First Year Advancement.

Scouts who have earned Second Class or are close should instead attend drop-in sessions in the Pathfinder area during afternoons. They should study and bring their Scout Handbooks with them.

## HIGH ADVENTURE

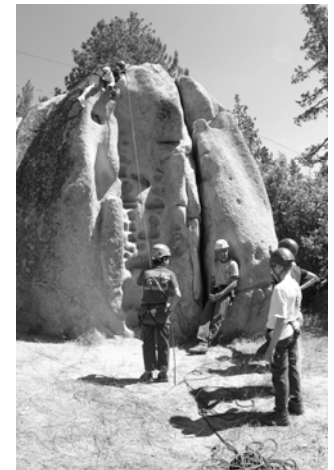
The High Adventure area offers many exciting activities appropriate for both new and senior Scouts, as well as Leaders. Younger Scouts can participate in climbing Indian Rock and taking bike trips, and older Scouts can challenge the COPE course and even rappel 100 feet off of Elephant's Knob.

### Merit Badges:

#### Climbing

### Other High Adventure Activities:

Rock Climbing  
Bike Rides  
COPE course



## SCOUTCRAFT

**Axe Yard:** Scouts can earn their Totin' Chip here, allowing them to carry and use knives, axes, and saws. They can also go the extra mile and earn the Paul Bunyan Woodsman Award

**Rope yard:** Scouts can learn not only the basic knots but also some of the more fun and unusual ones too. They can also use our pioneering supplies to build a camp gadget, like a washstand, gateway, or catapult! Units can even check out supplies when available to build projects in their campsites.

**Fire Yard:** Scouts can learn the basics and earn their Firem'n Chit. We also use the area for Wilderness Survival classes where we teach matchless fire starting.

Your unit can also use our **orienteering courses** or our **cooking area** for either troop advancement, competition, or fun!

### Merit Badges:

Camping      Orienteering      Pioneering  
Wilderness Survival

### Other Scoutcraft Activities:

Cat Eye Trail: a nighttime compass course great for a patrol.

## THE HANDICRAFT LODGE

This is an area where new Scouts can find success! Counsel them to work here. The Handicraft instructors work hard to create new and exciting projects for Scouts to work on, either as a merit badge or a spare time activity.

The cost of materials varies for the merit badges which can be purchased at the Trading Post. Bring extra spending money for kits and supplies.

### Merit Badges:

Art      Basketry      Pottery  
Woodcarving      Leatherwork

## CAMP GUIDELINES

*The Scout Oath is the guiding principle of the Western Los Angeles County Council camp program. The Camp rules follow the Scout Law and common sense. Here are the details.*

1. No Scout is allowed to leave camp after check-in without a release from his parents or Scout leader. Scout leaders and guests arriving or leaving **MUST** check in and out with Camp Business Office.
2. **All firearms are to be left at home.** Camp provides rifles and ammunition at the shooting sports area. Under no circumstance should ammunition be brought to camp.
3. Alcoholic beverages and illegal drugs are not permitted in any Scout camp.
4. **No open flames** are allowed in tents. Self-contained stoves and lanterns may be used. Unit fireguard chart must be posted and followed.
5. Liquid fuels may only be used under adult supervision.
6. Fireworks are prohibited and possession is a felony in the National Monument.
7. **NO SMOKING** in any Camp buildings, i.e., tents, lodges, dining hall, etc. There is a designated smoking area.
8. Scouts must stay out of other Units' campsites unless invited. Off-limit areas include: Ranger's home, maintenance area, Staff quarters, and closed program areas.
9. Food should not be kept in tents; a bear bag or bear can is required!
10. Do not bring privately owned watercraft. Our liability insurance only covers the in-camp use of Council-owned equipment (which has to meet specific National Standards).
11. Personal and unit vehicles are to be kept parked in the main parking lot. No vehicles may be permitted in campsites.
12. Pagers and cellular phones will not work in camp because there is no service.

*Camp staff and the Western Los Angeles County Council cannot be held responsible for lost or stolen items.*

## FOOD SERVICE

One of the outstanding features of Camp Whitsett is the central dining hall. Professional cooks are employed to prepare all meals, which are served cafeteria style. There is a fruit and cereal bar available with breakfast, and a salad bar is available with lunch and dinner. Cold drinks are provided with all meals, and water is available day and night. The Trading Post also sells some snacks and drinks during its business hours.

**Breakfast:** 8:00 - 8:45 a.m.

**Lunch:** 12:30 - 1:30 p.m.

**Dinner:** 5:30 - 6:30 p.m.

The Dining Hall procedures are:

- 1 Scouts should be clean and wearing an appropriate shirt and pants at all meals. ***Full uniform should be worn at dinner.***
- 2 All meals are open dining, served cafeteria-style. Units may come to the Dining Hall at any time during the meal hour to be served. A formal flag ceremony will take place after the evening meal, which all units **MUST** attend.
- 3 Each unit signs up to host at least one meal. Larger units may be asked to host two. Hosts report to the Dining Hall 20 minutes prior to the scheduled meal time to assist the Dining Hall Manager in setting tables, and will assist with clean-up at the end of the meal.
- 4 Each person is responsible for his own table clean-up after each meal. Please make sure your Scouts take care of this responsibility.
- 5 Check the Dining Hall bulletin boards for any program changes or announcements before leaving the Dining Big Top.
- 6 **Reservations for guests must be made and paid for in advance.**

## DIETARY NEEDS

Vegetarian alternatives are available at every meal. Just ask for the vegetarian alternative when you arrive at the serving counter. If there are special religious or medical dietary needs, please notify the Council Office at least **16 days prior to going to camp.**

## Aquatic Merit Badges:

Canoeing                      Rowing                      Small-Boat Sailing  
Swimming                      Lifesaving

Canoeing and Rowing classes are 90 minutes long each, and should only be taken by Scouts at least 14; Scouts *must* be at least 14 to take Small-boat Sailing. Scouts taking Swimming must bring long pants and a long sleeved shirt for the clothes inflation portion. Scouts taking Lifesaving must bring the same clothes for clothes undress on dry land only.

## Swimming Programs:

Safe Swim Defense (Leaders)	Safety Afloat (Leaders)
Beginner and Non-swimmer Instruction	Recreational Swimming
Wilderness Swim	Mile Swim
Otter Swim (early morning swim games)	Merit Badge Instruction

## Other Aquatic Programs:

Kayaking                      Canoeing                      Waterpolo

**BSA Lifeguard** — Scouts taking BSA Lifeguard must have earned the Swimming, Rowing, Lifesaving, and First Aid Merit Badges *prior* to beginning the program.

## AQUATICS

This is an exceedingly popular area. There is time available Monday through Thursday for free/open swimming and boating, and nearly all of the aquatics merit badges, awards, and certifications are available.

### 1. SWIMMING ABILITY TESTS:

- A. Non-Swimmer
- B. Beginner - Jump into water, level off, swim 25 feet; stop; turn sharply, resume swimming as before, and return to starting place
- C. Swimmer - Jump into water, level off; swim 75 yards in a strong manner using one of the following strokes: side-stroke, breaststroke, or American crawl; turn, then swim for 25 yards using the elementary backstroke; float on the back for one minute; swim in. (This must all be done continuously).

### 2. SAFE SWIM DEFENSE:

In accordance with National Boy Scouts aquatics policy, all Camps use the 8-point SAFE SWIM DEFENSE PLAN. All Unit Leaders conducting unit swims and other unit aquatics activities are expected to follow the same plan.

**Adult "Safe Swim Defense" and "Safety Afloat" certifications are available. "Trained" cards are presented to participants with completion.**

### 3. PERSONAL FLOATATION DEVICES (P.F.D.s)

P.F.D's are to be used by everyone (including Staff) at all times when using canoes, rowboats, kayaks and sailboats unless given special permission by the Aquatics Director.

### 4. BUDDY SYSTEM:

The buddy system will be used at all times by **ALL** Scouts, Leaders, and Staff involved in **ANY** aquatics program. Proper use of buddy tags and of the buddy boards will be strictly enforced.

## COMMISSARY

The Commissary staff is here to serve you and your unit. If you have any special requests, or questions, please ask so that we may help you. During your unit's stay in camp you will probably wish to try a Dutch Oven Cobbler or make ice cream. Dutch Ovens and supplies for making cobblers and ice cream are available from the Commissary. Sign up to make these items on Sunday or check with the Business window. Lost and found can also be turned in and retrieved at the commissary window.

## MAIL SERVICES

It is important that parents write at least one letter or postcard to their Scout while at camp. All Scouts (and leaders, too!) can get homesick sometime during their stay. Mail is delivered to Camp at least once a day, but a letter or postcard can take from one to three days to get to Camp. Mail should be addressed to:

Name \_\_\_\_\_  
Unit # \_\_\_\_\_ Council \_\_\_\_\_ Session # W \_\_\_\_\_  
Camp Whitsett, BSA  
HC 1 Box 105  
Kernville, CA 93238

**Putting the Unit number, council and session number on mail will avoid delays.** Any mail received after a Unit leaves camp will be returned to sender. Be sure that a return address is on all mail sent to camp. Leaders are asked to check for phone messages and mail each afternoon at the business window. Please note that FEDEX **DOES NOT** deliver to the camp. Please send packages UPS.

The camp phone number is (760) 376-6469. It's fax number is (760) 376-1379. These numbers are for emergencies only. Contact the council office for non-emergency information.

Public phones are available in camp. Cell phones will not work in camp.

[www.bsa-la.org/camping/whitsett/whitsett.html](http://www.bsa-la.org/camping/whitsett/whitsett.html)

and

[www.whitsett.org](http://www.whitsett.org)

## RELIGIOUS SERVICES

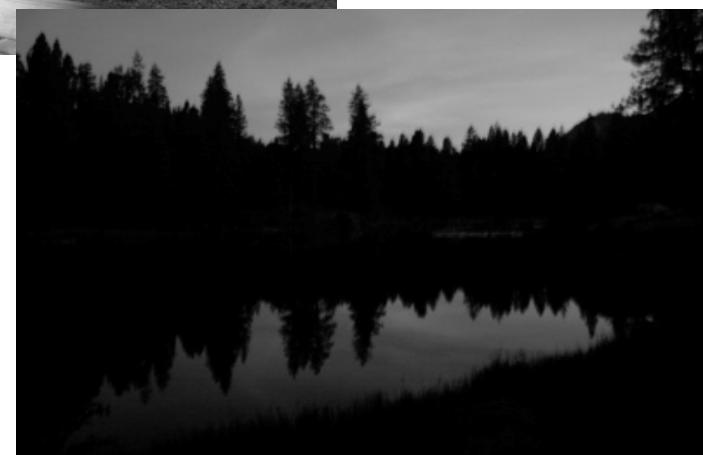
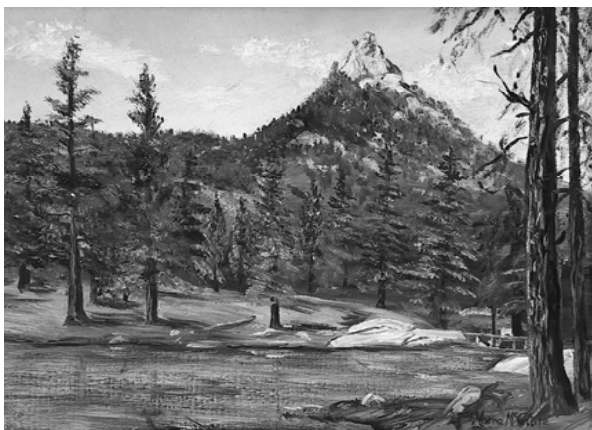
A Scout's Own (a non-denominational service), is scheduled weekly, subject to the availability of a priest/chaplain. A Shabbat Service is held Friday evening after the Flag Ceremony. Other religious services may be held subject to the availability of staff. All scouts and leaders are welcome to attend any and all religious services, regardless of faith. All areas are closed during services so that campers and staff have an opportunity to attend. Scouts may assist at services, lead grace at meals, or work on religious emblems while in camp.

## SPECIAL SERVICES

**Commissioner:** When you arrive at Camp, you will be met by your Camp Commissioner. He will work with you to develop ideas so that your Unit will be able to take advantage of every aspect of the Camp program.

Your Camp Commissioner is a valuable resource who can offer assistance or suggestions as needed. He is well versed in the entire Camp operation and can help you make the program fit your Unit's needs. He is available to help at any time.

**Unit Issue:** Equipment is available for Camp beautification and conservation projects, campsite repairs and improvements, pioneering projects, cookouts, outpost campouts and more. We have everything from cook kits and Dutch ovens to axes, picks, shovels, and saws. Please contact your Camp Commissioner.



## **EARNING MERIT BADGES**

Since Scouting's early years, summer camp has been an excellent place to earn Merit Badges. Many Scouts have made it quickly through the ranks by attending camp every summer. Scouts should be counseled to read the merit badge books for the badges they are hoping to complete, and do as much paperwork as possible before they come to camp.

### **How and When to Choose**

As a part of every Scout's personal growth agreement, badges and awards to be earned at Camp should be discussed with the Scout's goals in mind. The unit's final list of Scouts and their badges should wait until after the Leaders' meeting in May, but should be completed before arrival at Camp.

### **Advancement Opportunities**

Summer camp is full of chances to earn awards like the Mile Swim, NRA Awards, BSA Lifeguard, and so on. Our Staff members are also available to sit on Rank Advancement boards of review if their schedule allows.

### **Merit Badge Prerequisite Form**

Some of the merit badges offered at Camp cannot be completed unless the Scout fulfilled certain requirements for the badge before coming to Camp. These prerequisites are specified on the Merit Badge Prerequisite Form included in the Leader Packet at the Leader Meeting. Scouts may have fulfilled some of the requirements for badges they plan to complete at Camp and do not want to repeat these requirements. The form verifies that the Scout has met the requirements. It must be filled out and signed and turned into the merit badge instructor on the first day of instruction at camp.

### **Which Badges to Take**

The following pages detail the specific areas in which merit badges can be earned and some of the other opportunities offered.

### **Partial Completions**

When a badge is not finished at Camp the Scout is given a "partial." This is shown to a regular district merit badge counselor when the Scout is ready to complete the badge. Scouts are allowed to bring partials to camp in merit badges we offer if they were begun less than 12 months prior.

## **TRADING POST**

The Camp Trading Post provides a good selection of souvenir and comfort items for sale to Scouts and Scouters. Here is a sample of what may be available. Actual goods stocked vary from year to year.

### **Souvenirs**

Camp mugs and water bottles  
T-shirts  
Patches  
Belt buckles  
Carabineers

### **Food items**

Chips  
Ice cream  
Soft drinks  
Candy  
Popcorn  
Other snacks

### **Personal items**

Flashlights  
Batteries  
Postcards  
Stamps  
Film  
Toothbrush  
Toothpaste  
Soap  
First aid kits  
Chapstick  
Uniform parts

### **Advancement items**

Handicraft kits  
Basketry kits  
Woodcarving kits  
Craftstrip  
Merit Badge books  
Indian Lore items  
Leatherwork kits  
Neckerchief slides  
Fishing poles  
Fishing equipment and bait

### **Miscellaneous**

Scout knives  
Scout literature  
Sharpening stones  
Compasses

An adult should serve as "banker" during the week, allowing Scouts to check money in and out with him. This prevents "sticky fingers" and "butter fingers" alike.

About \$60 per Scout should be enough to meet most souvenir and other needs. Other money might be needed if merit badges have materials cost (especially handicraft merit badges).



<b>Map and directions to Camp</b>	<b>Pg 23-4</b>
<b>Sunday Check-In Procedures</b>	<b>Pg 25</b>
<b>Camp Map</b>	<b>Pg 26-7</b>
<b>Camp Daily Schedule</b>	<b>Pg 28</b>
<b>Planning the Unit Program</b>	<b>Pg 29</b>
<b>Special Programs</b>	<b>Pg 31</b>
<b>Merit Badges and Activities by Area</b>	<b>Pg 36-42</b>
<b>Special Recognition and Awards</b>	<b>Pg 44-45</b>
<b>Scoutmaster Events</b>	<b>Pg 46</b>
<b>Experience Tells Us</b>	<b>Pg 47</b>

## CAMP WHITSETT BEAVER PROGRAM

Here is an opportunity for your Senior Patrol Leader or another senior Scout to get a preview of camp *and* work on a few merit badges which he might not have time to do while working in his capacity as SPL when the unit is in camp. Through this program he will come to camp for the week prior to the rest of the unit. A registration form will be included in the packet of forms given out at the Leader Meeting and is online. The fee for the program should be paid as part of the regularly scheduled payment plan.

**This program offers:**

- Leadership training
- Camp Whitsett orientation
- Advancement
- Early program signups

**The program is open to:** The Senior Patrol Leader or older Scouts with leadership development potential

**Arrival:** Scouts participating in the Beaver Program arrive on the Sunday (after 1 p.m.) of the week prior to their unit's arrival and stay through the following weekend to be ready for the incoming unit.

**What to bring:** All equipment listed on the Scouts' "What to Bring" list **PLUS a tent**, his medical form, and a plan of the unit activities

## ROCK CLIMBING

Scouts under 14 can learn how to rock climb in camp on Indian Rock. Those over 14 can learn advanced climbing skills and earn the climbing merit badge, and may even qualify for the coveted Face of Sentinel Climb or the 100' Elephant Knob rappel on Friday morning (only a few qualify, at the discretion of the High Adventure Director).

## CARVER RANCH OVERNIGHT EXPERIENCE

One night during the week, your Unit will have the opportunity to “get out of Camp” and have a great night of fun and fellowship. You will have the choice to hike, bike or ride a horse. Dinner will be provided along with great activities. Your Scouts and the staff together will provide the camp-fire program, so bring your best skits and songs! Sleep out under the stars and you'll be back in camp for a hot breakfast.

## FISHING

There are rainbow trout in the rivers that flow into Lake Ida and you are welcome to fish from the shores around Lake Ida or below the dam. You should bring your own equipment. A fishing license is required for those aged 16 or over - available at sporting goods stores in California, or at the Lake Isabella supermarket. Licenses are not sold at camp.

## HORSE PROGRAM

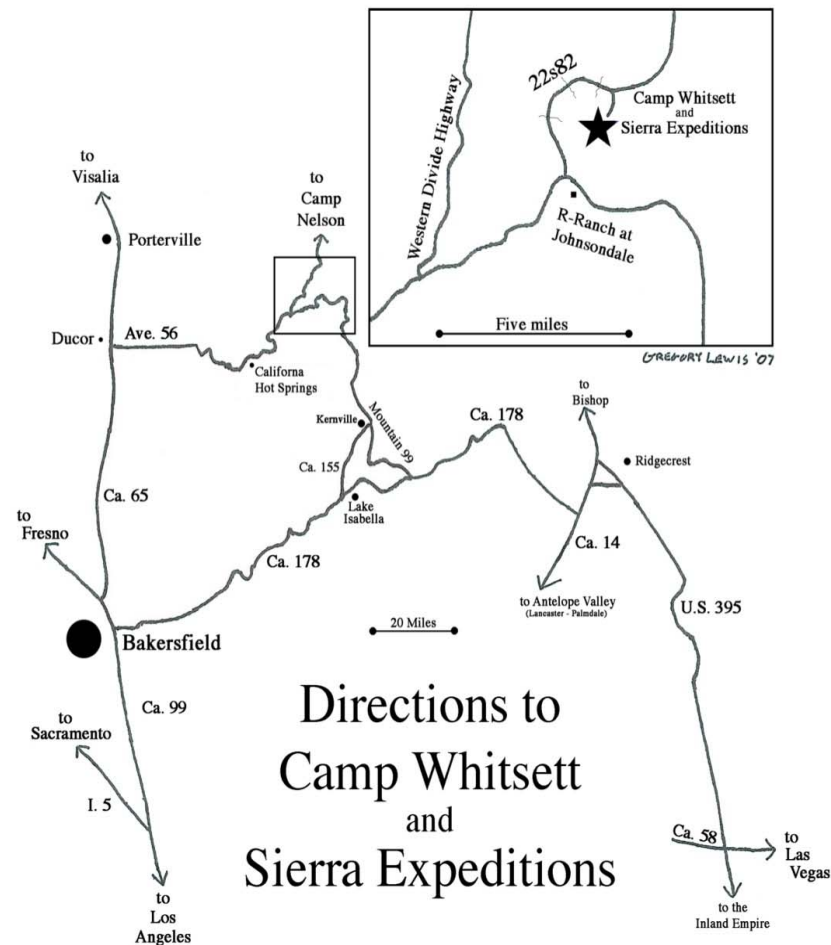
The Horsemanship Merit Badge is designed for Scouts 14 and older, and requires an additional cost. Whitsett also offers trail rides for all Scouts and Leaders. Either is great way to be introduced to horsemanship or to increase your skills.

## SIERRA CPT

This program for older boys is part of Camp Whitsett's effort to keep the older youth interested and involved in their units by coming to camp and participating in a leadership building experience. As your youth begin to age in maturity through their teen years, they may have few merit badges they desire to earn while at camp. With CPT, your 14 – 20 year olds are given a tremendous growing experience jam packed with High Adventure activities and leadership training.

## Travel map to Camp Whitsett

**Camp Whitsett** is located in the Sequoia National Forest in Tulare County, about 32 miles north of Kernville, California. There is no “physical” address for the camp (to find on an internet map help site), but map coordinates are: 36 degrees north latitude, 118 degrees, 32 minutes, 17 seconds west longitude.



## **DIRECTIONS TO CAMP WHITSETT**

### **From the Northern Central Valley (Sacramento/Fresno/Porterville)**

From Porterville, go south on CA-65 to Ducor, and take Avenue 56 East. Travel 50 miles through California Hot Springs until you reach the forest service road 22s82 on your left; it is signed also for Peppermint Campsite and the Wilderness Trailhead. (If you reach R-Ranch at Johnsondale, you have gone too far.) Camp Whitsett is on the right, after three miles and public campsites numbers 1,2, and 3.

### **From the Southern Central Valley (Bakersfield) and the LA area**

Take Interstate 5 North to CA-99 North to Bakersfield. Then take CA-178 East 40 miles to Lake Isabella. Exit at CA-155 W and travel 11 miles up the edge of the lake to Kernville. Stay right when CA-155 turns left; continue straight on Wofford Heights Blvd. and Burlando Rd. Turn left on Mountain Road 99/Sierra Way (a T-intersection) and go 20 miles to R-Ranch at Johnsondale. Immediately past this is forest service road 22s82 on your right; it is signed for Camp Whitsett and also for Peppermint Campsite and the Wilderness Trailhead. Camp Whitsett is on the right, after three miles and public campsites numbers 1,2, and 3.

### **From the Mojave desert (Las Vegas, Nevada and Inland Empire, California)**

From the intersection of US Highway 395 and CA-58 (Kramer's Junction/Four Corners), go North 50 miles on the 395. Take the signed offramp to CA-14/Inyokern West for five miles; turn left again onto CA-14 South. After three miles, turn right onto CA 178 West. Take the 178 for 32 miles, and turn right onto Sierra Way; take this for 17 miles on the East edge of the lake into Kernville, and then another 20 miles to R-Ranch at Johnsondale. Immediately past this is forest service road 22s82 on your right; it is signed for Camp Whitsett and also for Peppermint Campsite and the Wilderness Trailhead. Camp Whitsett is on the right, after three miles and public campsites numbers 1,2, and 3.

The following website has a link to view a map in Google Maps and Google Earth: [www.Whitsett.org/Driving.htm](http://www.Whitsett.org/Driving.htm)

## **SPECIAL PROGRAMS**

### **SENTINEL PEAK**

A popular part of the camp experience is to watch the sunrise from atop Sentinel Peak. This trip leaves at 4:45 in the morning and you can be back before breakfast. Those who scale the peak are eligible to purchase a Sentinel Peak patch from the Trading Post. Sign up with your Pathfinder to schedule your trek up the peak.

### **WILDERNESS SWIM**

Take your unit for a swim in our wilderness swim area by the dam. Sign up with the Aquatics Director for this program.

### **CAT EYE TRAIL**

The Cat Eye Trail is a great way to change the pace of the week and a challenge to all Scouts. This is a great test for a patrol leader's teaching skills, compass skills and leadership talents. Knowledge of compass, pace and map orientation is helpful. Check with the Scoutcraft Area regarding this program.

### **MOUNTAIN BIKE PROGRAM**

Exciting wilderness mountain bike trips, including meals served on the trails, add a new dimension to the Whitsett experience. We have many trails, and Scouts may choose to attend the exciting overnight via bikes. Please do not bring your own mountain bikes; we are not insured for them and biking is not permitted through Camp.

### **PROJECT COPE**

Project COPE stands for "Challenging Outdoor Personal Experience." Group initiative games and low-course activities are suitable for Patrol events. Boys climb, swing, balance, jump and think of solutions to a variety of challenges. Most achieve much more than they thought they could. For Scouts over the age of 14 and adults, the high COPE course tests individual skills and agility. It offers exciting outdoor physical and mental challenges that attract and retain older boys in Scouting. The underlying goals of a Project COPE course are consistent with Scouting: group activities are ideal for emphasizing the patrol method and developing teamwork and leadership skills, and individual activities promote personal growth.

## “WHAT I WOULD LIKE TO DO AT CAMP WHITSETT”

This is a program planning guide to help the Unit Leader's Council to plan a program responsive to the needs and interests of the Scouts.

Review the forms you receive in the Spring Leaders packet or online, to see that individual Scouts will have sufficient activities to keep them occupied, but not over-committed. Use these forms when completed by the Scouts to work with your Unit Leader's Council in planning your Camp program.

### MERIT BADGES

Whitsett programs are not reserved ahead of time. At the Leader and SPL meetings on Sunday, you will learn about any changes in the Whitsett Merit Badge sessions. There is no need to frantically sign-up at meetings: Merit Badge and Trail to First Class signups are handled online. Various forms are provided online to assist in planning your week. These forms are for your use and are not turned in.

### WHITE WATER RAFTING

**(Program is subject to adequate water levels.)**

A trip on the Kern River in a raft can be the high point of a Scout's week. Join the experts from a local rafting company for an experience you will not forget. Sign ups are done at camp with the rafting company Sunday evening directly following the leaders meeting. You must give the fees and rafting forms to the Sierra South Rafting company on the day of your trip. On occasion kayaking may be substituted for rafting due to low water levels. Their number for additional information is (800) 457-2082.

All persons wishing to participate in the White Water Rafting program must bring a signed parental release form to camp with them. A copy of this form is included with your packet and additional copies are available from the Council Office. There are no exceptions to this rule.

### CAMP FIRES

Each week, the Camp Whitsett Staff presents two campfires. The opening campfire is on Sunday evening at 8:30 p.m. Parents who provide transportation to camp are invited to stay for this campfire before returning home. The closing campfire on Friday evening at 8:30 p.m. wraps up the week with more songs, skits, and weekly awards. A scout- and staff-run campfire is held each night at the Carver Camp Overnight.

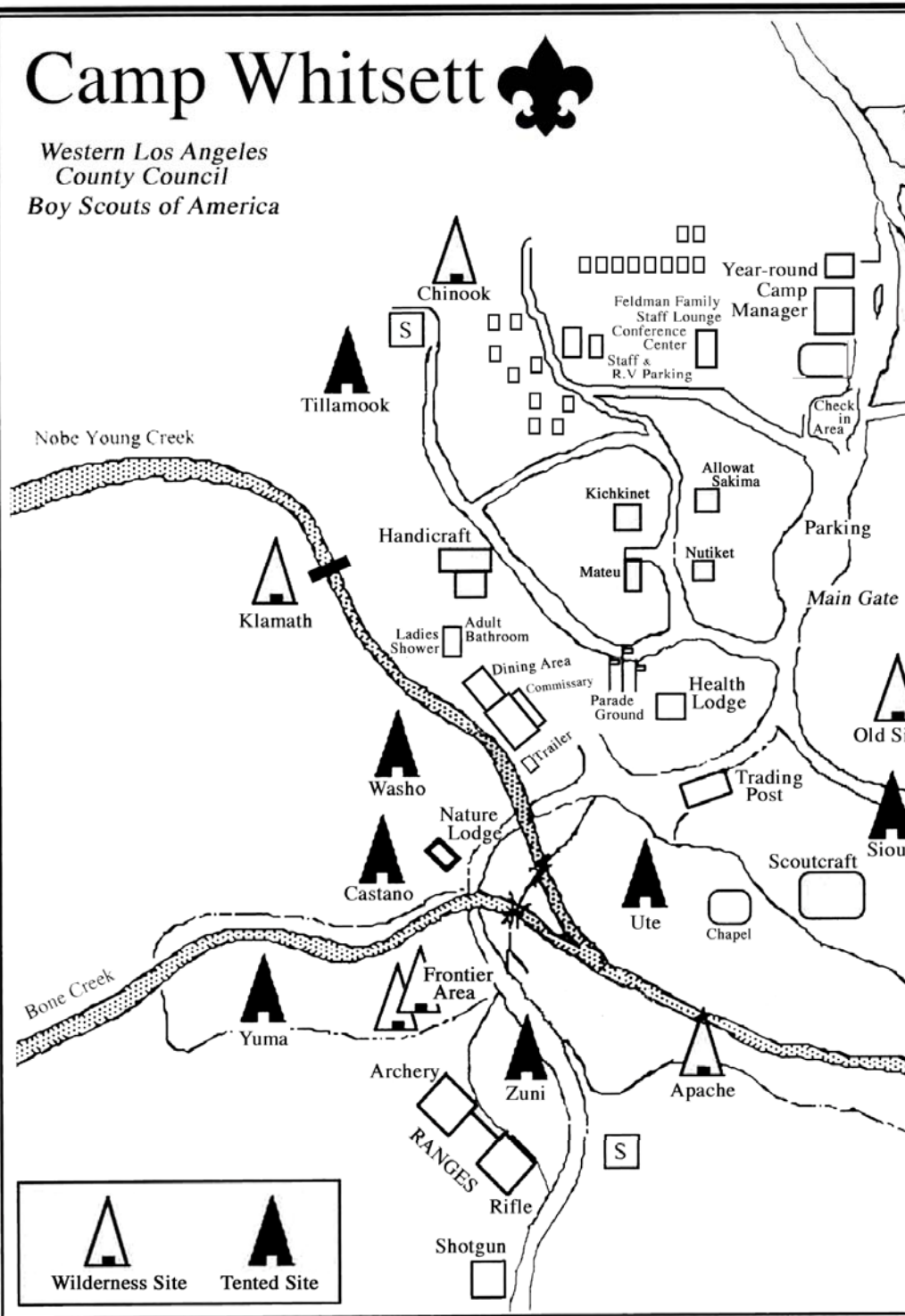
## SUNDAY CHECK-IN PROCEDURES

1:00-3:00	Arrival of Units. Staff greets Units in parking lot and Unit is assigned a Unit Guide for the week. Unit Leader checks in with paperwork at the Trading Post. The Check-in Guide leads the rest of the unit to its campsite and then the Health Lodge. Unit Guide then gives the unit tour and orientation of Camp Whitsett.
2:00-4:00	Waterfront orientation and Swim Check given informally throughout entire afternoon.
5:30-6:30	Dinner. (Open dining, cafeteria-style)
6:30	Fire Drill / Flag Retreat Ceremony - Main Parade Ground
<b>7:00</b> 7:15	<b>Leader's Meeting and Orientation (Big Top)</b> SPL Meeting with Pathfinders (to be announced)
8:30-9:45	Opening Campfire
10:00	Taps



# Camp Whitsett

Western Los Angeles  
County Council  
Boy Scouts of America



## PLANNING YOUR UNIT PROGRAM

A well-planned program will ensure that your Scouts get the most fun and adventure from camp.

Camp Whitsett has many opportunities to meet the outdoor needs of every Scout and unit, and a wide variety of facilities, equipment, staff, and activities covering Nature, Scoutcraft, Aquatics, Shooting Sports, and Handicraft.

We provide programs you expect to see at many camps, and additional programs such as white water rafting, rock climbing, horseback riding, the Carver Ranch Overnight Experience, and the mountain bike program. Project COPE (Challenging Outdoor Personal Experience) provides a challenge to older Scouts and leaders alike.

Plan your program carefully. Explain the aspects of our program to Scouts and parents alike. Work with individuals to set special summer goals in Scoutmaster's Conferences. Your Unit Leaders Council will then be able to outline a program reflecting your boys' needs. Forms will be provided in the leader packet (distributed at the Leader's Meeting in early May), to formulate the plan for your unit.

An ideal unit program is flexible enough to accommodate the special interests of every Scout. Keep in mind that Camp Whitsett, in the Sequoia National Forest, offers opportunities not found in the city. Experience has shown that the best program has a healthy balance of advancement and fun activities. On the average, Scouts earn two or three merit badges each. More than that prevents the average Scout from fully participating in the Camp Whitsett program.

To have the best week possible, the Whitsett experience begins now! Plan and prepare your Scouts **before** you come to camp. We look forward to seeing you in camp this summer.

For the most up-to-date camp information, to obtain downloads of camp forms, email the Camping Department at [Camping@bsa-la.org](mailto:Camping@bsa-la.org)  
Or visit [www.bsa-la.org/camping/whitsett/whitsett.html](http://www.bsa-la.org/camping/whitsett/whitsett.html)  
and [www.whitsett.org](http://www.whitsett.org)

## CAMP WHITSETT DAILY SCHEDULE

### SUNDAY

- 1:00-3:00 p.m. Check-in to Camp
- 1:15-4:30 p.m. Medical re-check, swim check, Camp tour
- 5:30 p.m. Dinner - at the BIG TOP - line up by units
- 6:35 p.m. Evening flag ceremony - Main Parade Ground
- 7:00 p.m. Leaders' Meeting
- 7:15 p.m. SPL Meeting
- 8:30 p.m. Campfire
- 10:00 p.m. Lights out - to bed

### MONDAY THROUGH FRIDAY

- 7:55 a.m. Flag Ceremony- Main Parade Ground
- 8:00 a.m. Breakfast (Table Hosts arrive 20 minutes prior)
- 9:00-12:00 Areas Open for Activities & Merit Badges
- 12:30- 1:30 Lunch
- 1:10 p.m. SPL Meeting with Unit Guides (Mon. - Fri.)
- 2:00- 5:00 Areas Open for Activities & Merit Badges
- 5:30- 6:30 Dinner
- 6:35 p.m. Flag Retreat Ceremony - Main Parade Ground
- 7:00- 8:00 Evening Activities (except Wed. & Fri.)
- 8:30 p.m. Special Evening Programs (as available)
- 10:00 p.m. Camp curfew/Lights out

### FRIDAY

- Same as above, except for:
- 4:00 p.m. Aquacade
- 5:30 p.m. Dinner - line up by units with meal tickets
- 7:00 p.m. Shabbat Services held at the Chapel by Scoutcraft
- 8:30 p.m. Closing Campfire

### SATURDAY

- 6:00 a.m. Business Office opens
- Begin cleaning up and checking out of camp
- 6:15 a.m. Trading Post Opens
- 7:00 a.m. Directors available for Merit Badge Issues
- 7:55 a.m. Flag Ceremony - Main Parade Ground
- 8:00 a.m. Breakfast (Table Hosts arrive 20 minutes prior)
- 10:30 a.m. **ALL UNITS MUST BE CHECKED OUT OF CAMP**

